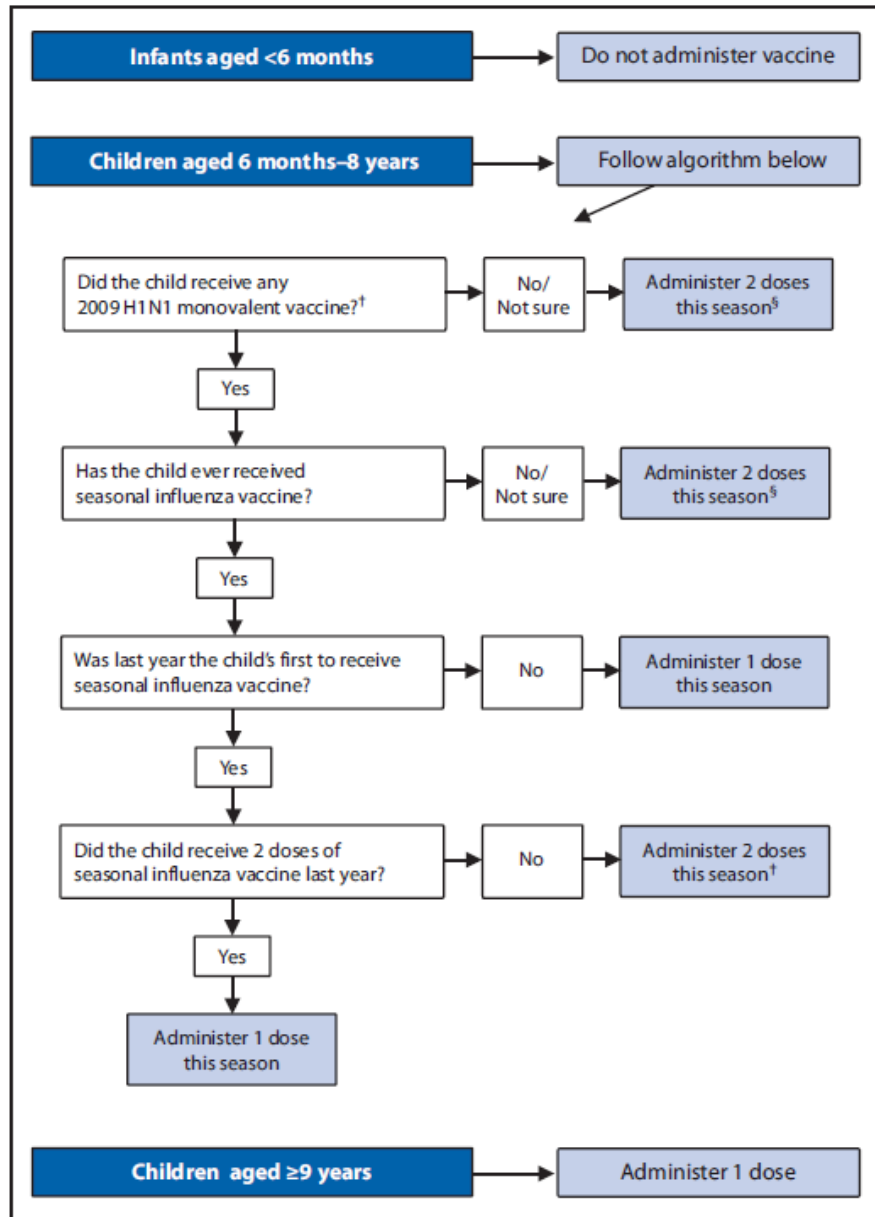


RECOMMENDED 2010 – 2011 SEASONAL INFLUENZA VACCINE DOSES FOR CHILDREN

FIGURE 3. Number of 2010–2011 seasonal influenza vaccine doses recommended for children



* Figure developed by CDC with the American Academy of Pediatrics, Committee on Infectious Diseases.

† Children who had a laboratory-confirmed 2009 pandemic H1N1 virus infection (e.g., reverse transcription–polymerase chain reaction or virus culture specific for 2009 pandemic influenza A(H1N1) virus) are likely to be immune to this virus. At provider discretion, these children can have a “Yes” entered at this box, and proceed down the path to the next box to determine whether two doses are indicated based on seasonal vaccine history. However, if no test result is available and no influenza A(H1N1) 2009 monovalent vaccine was administered, enter “no” here.

§ Interval between 2 doses is ≥ 4 weeks.

Chart provided by Centers for Disease Control and Prevention. *Prevention and Control of Influenza with Vaccines – Recommendations of the Advisory Committee on Immunization Practices (ACIP), 2010. MMWR Early Release 2010; 59 (July 29, 2010): page 34*